

# GREEN AUDIT REPORT 2024



**INTERNAL QUALITY ASSURANCE CELL (IQAC)**

**Indira Gandhi Government College,  
Pandariya Distt.-Kabirdham (C.G.)**

## **Green Audit Assessment Team**

(Internal Auditors )

- Mr. Madhusudan Singh Rajput (Asst. Proff) Department of Sociology
- Mr. Dinesh Kumar Kashyap (Asst. Proff) Department of History
  - Mr. Chitrasen Thakur (Asst. proff) Department of Botany
- Mr. Satyam Kumar Dounde (Asst. proff) Department of Zoology
- Mrs. Madhuri Ratna Bhaskar (Asst. proff) Department of Zoology
  - Mr. Bhanjan saw (Asst. proff) Department of Botany

(External Auditor)

Mahendra Joshi

Range Officer Pandariya

  
Range Officer  
Pandaria East

# Acknowledgement

---

By Head of Department of Botany, Indira Gandhi Government College, Pandariyaof is very much thankful to Principal Dr. B.S.Chauhan, IQAC Coordinator for motivating us for 'Green Audit 'For Educational & Evaluation.

# **CONTENTS**

- Summary
- Introduction
- About our College
- Objectives
- List of Flora species
- List of Fauna Species
- Plantations during last years
- Expenditure
- Recommendations

## Summary

The Rapid urbanization and economic development at local, regional and global level has led to several environmental and ecological crises. On this background it becomes essential to adopt the system of the Green Campus for the institute which will lead for sustainable development. The purpose of the audit was to ensure that the practices followed in the campus are in accordance with the Green Policy & Energy Policy adopted by the institution. The methodology included: preparation and filling up of questionnaire, physical inspection of the campus, observation and review of the documentation, interviewing key persons and data analysis, measurements and recommendations. It works on these several facets of 'Green Campus' including Water Conservation, Tree Plantation, Waste Management, Paperless Work, Alternative Energy Resources, Mapping of Biodiversity Etc..



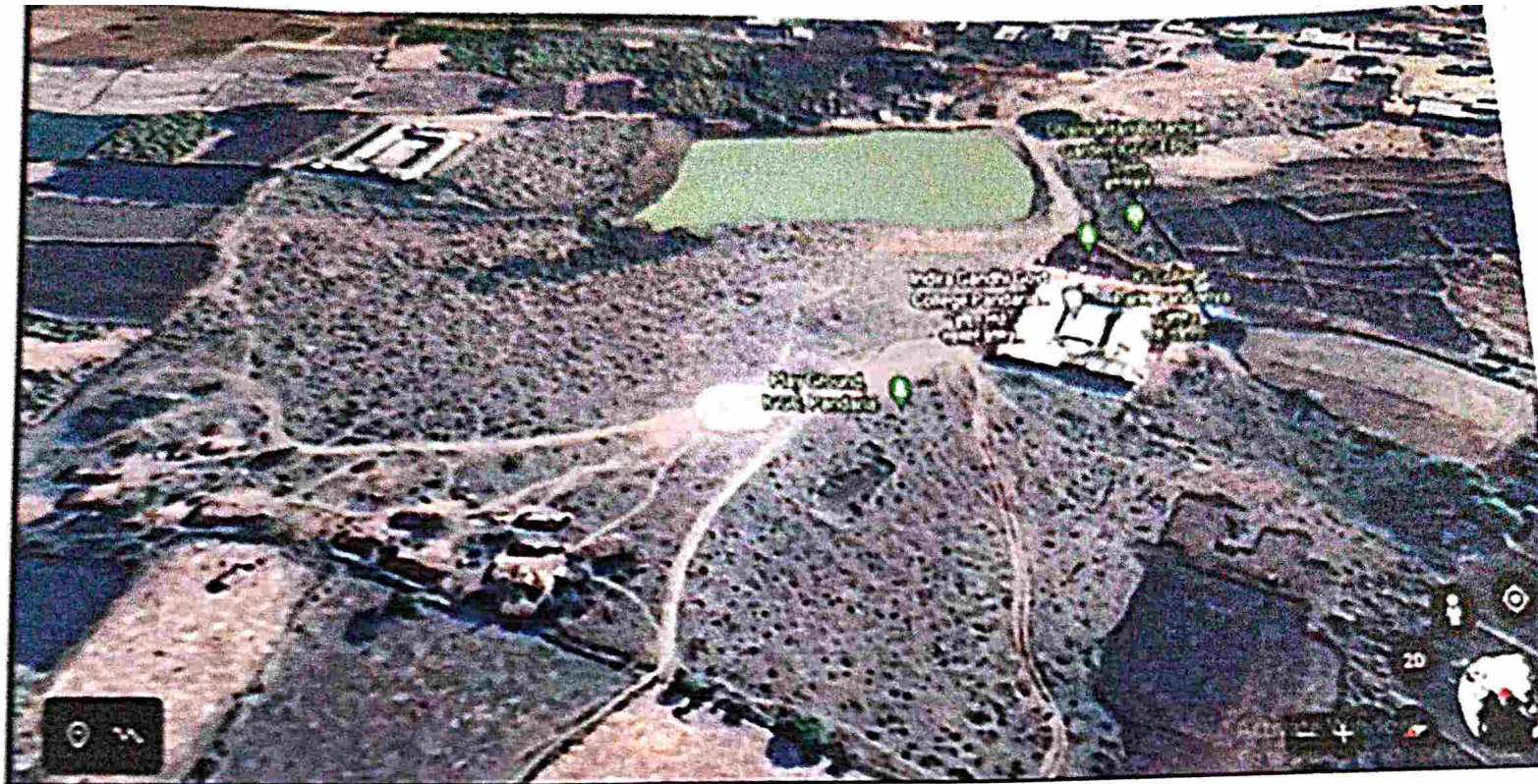
## **INTRODUCTION**

Green Audit can be defined as systematic identification, Quantification, recording, reporting and analysis of components of Environmental diversity. The 'Green Audit' aims to analyze environmental practices within and outside the college campus, which will have an impact on the eco-friendly ambience. It has initiated with the motive of inspecting the work conducted within the organizations whose exercises can cause risk to the health of inhabitants and the environment. Through Green Audit, one gets a direction as how to improve the condition of environment and there are various factors that have determined the growth of carrying out Green Audit.

## **ABOUT OUR COLLEGE**

Indira Gandhi Government College, Pandariya is emerging college in Kabirdham District of Chhattisgarh. It was established in 1984 and enlightening the student fraternity of Pandariya and nearby villages. The most respected first Principal Dr. V. B. Choudhary gave special attention to College. The College has touched new heights by making its goal meaningful. The college was established in 1984, when the college had a system of study in the arts faculty till graduation. Started 37 years ago with about 100 students, the college is today imparting education to about 1500 students. Earlier, the college was being run in an additional room of basic primary school Pandariya which is today operating from its own 15 acre building in Village-Rauha (Pandariya). In this college from the academic session 1984 to 2008 only B.A. Classes of the Faculty of Arts continued to be conducted. In the education session 2008-09, B.Sc. and B.Com. Classes were started under public participation and from the session 2010-11 MA in Sociology & M.Com Begins in 2019 Session , History and Hindi literature classes are conducted under state Government. Today the study-teaching work of all the faculties of the college is being done continuously.





Geographical location of Indira Gandhi Government College,  
Pandariya Distt.- Kabirdham (A/C To Google earth)



## **OBJECTIVES**

The main objective of the Green audit is to promote the Environment Enhancement, Restoration and Conservation in the College Campus. The purpose of the audit is to identify, quantify, describe and prioritize framework of Environment Sustainability in compliance with the applicable Regulations, policies and standards.

## The Main objectives of carrying out Green Audit are:

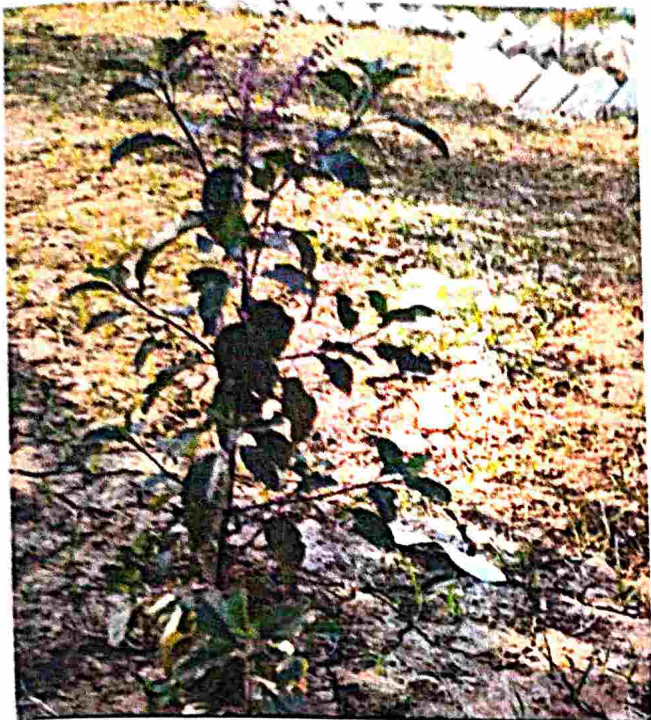
- To document the floral and faunal diversity of the college.
- To document the ambient environmental condition of weather, air, water and noise of the college.
- To Report the expenditure on green initiatives during the previous year.
- To Recommendations for the maintenance & Sustainable development of Environment.

## PHANEROGAMIC FLORA LIST

S.N.	COMMON NAME OF FLORA	SCIENTIFIC NAME OF FLORA	NUMBERS OF FLORA (Approximate)
1.	BABOOL	<i>Acacia nilotica</i>	50
2.	GUDHAL	<i>Hibiscus rosasinensis</i>	20
3.	MANGO	<i>Mangifera indica</i>	4
4.	PALASH	<i>Butea monosperma</i>	150
5.	BER	<i>Ziziphus mauritiana</i>	20
6.	GUVAVA	<i>Psidium guajava</i>	5
7.	ASHOK	<i>Saraca asoca</i>	10
8.	AMLA	<i>Phyllanthus emblica</i>	4
9.	COCONUT	<i>Coccus nucifera</i>	1
10.	CHROTA	<i>Cassia obtusifolia</i>	150
11.	PALM	<i>Dysoxylum lutescens</i>	20
12.	ROSE	<i>Rosa rubiginosa</i>	3
13.	DHATURA	<i>Datura alba</i>	2
14.	NEEM	<i>Azadirachta indica</i>	5
15.	CHANDNI	<i>Tarbutan montana divaricata</i>	20

16.	DATE PALM	<i>Phoenix dactylifera</i>	10
17.	VIDYA TREE	<i>Thuja occidentalis</i>	5
18.	CHRISTMAS TREE	<i>Araucaria columnaris</i>	1
19.	MUNGA	<i>Moringaolifera</i>	5
20.	GILOY	<i>Tinosporacordifolia</i>	2
21.	BADAM	<i>Prunusdulcis</i>	1
22.	MONGRA	<i>Jasminumsambac</i>	20
23.	MARIGOLD	<i>Tageteserecta</i>	15
24.	SUPARI	<i>Areca catechu</i>	2
26.	BOTTLE BRUSH	<i>Melaleucacitrica</i>	2
27.	BLACKBERRY	<i>Syzygiumcumini</i>	5
28.	BOUGENVILLEA	<i>Bougenvilliaglabara</i>	5
29.	TULSI	<i>Osimumsactum</i>	20
30.	MANGO	<i>Mangiferaindica</i>	10
31.	SCUTCH GRASS	<i>Cynodondactylon</i>	15000
32.	ATIBALA	<i>Abutilon indicum</i>	10
33.	CHAROTA	<i>Cassia obtusifolia</i>	150
34.	MADAR	<i>Calotropisgigantea</i>	15
35.	BHARBHANDA	<i>Argemonemexicana</i>	50
36.	RATRANI	<i>Cestrum nocturnum</i>	40





*Osimum sanctum*



*Thuja occidentalis*



*Thujar occidentalis*



*Dypsis lutescens*



*Butea monosperma*

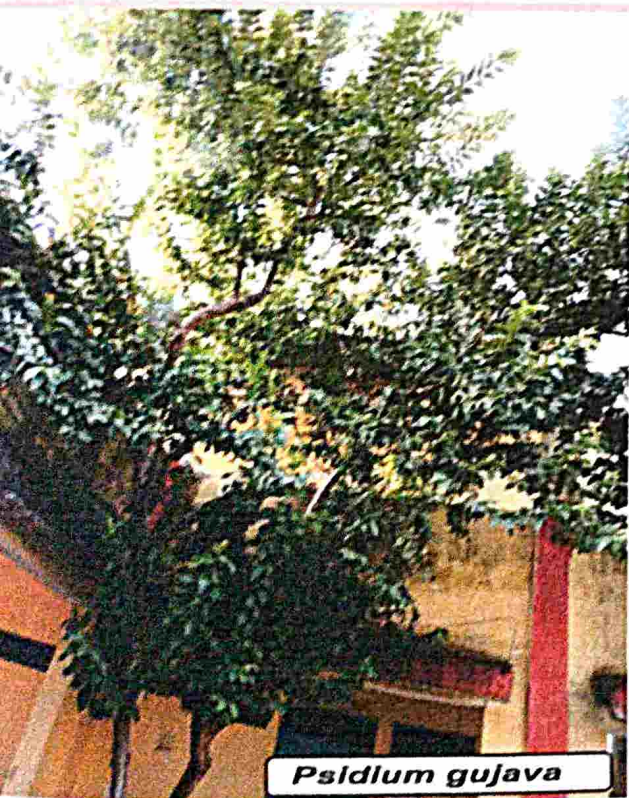




*Syzygium cumini*



*Phoenix dactylifera*

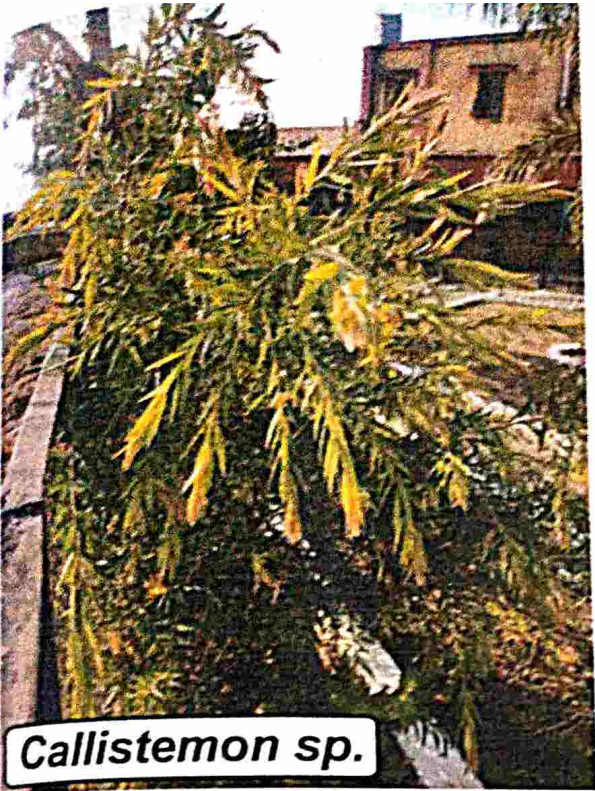


*Psidium guajava*



*Hibiscus rosa sinensis*

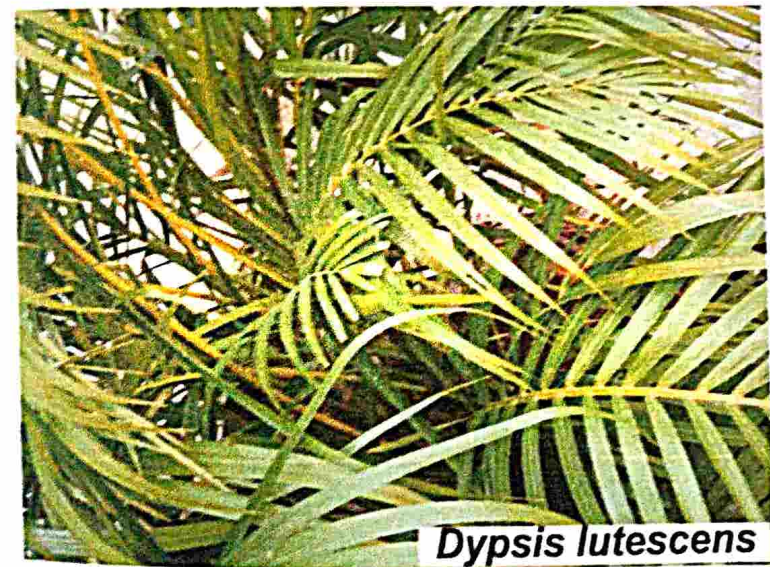




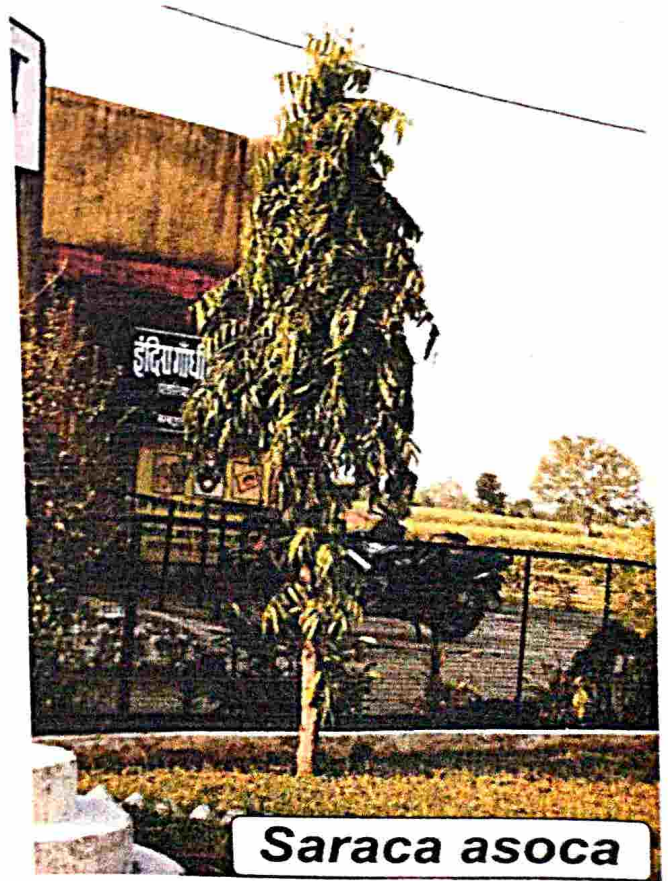
*Callistemon sp.*



*Prunus dulcis*



*Dypsis lutescens*



*Saraca asoca*

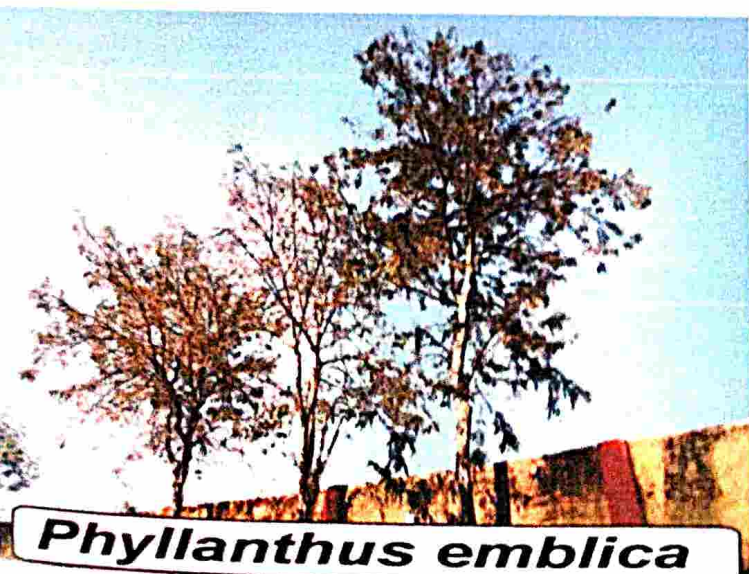




*Coccus nucifera*



*Ziziphus mauritiana*



*Phyllanthus emblica*



*Tarbanae montana divertica*



## VERTEBRATE'S FAUNA DETAILS

S.N.	NAME OF FAUNA	SCINTEFIC NAME OF FAUNA	NUMBERS OF FAUNA(APPROX.)
1.	Tilapia	<i>Mozambique tilipia</i>	700
2.	Frog	<i>Ranatigrana</i>	250
3.	Tree frog [hyla]	<i>Polypedatusleucomystax</i>	70
4.	Toad	<i>Duttaphrynusmelanostictus</i>	28
5.	Indian mabuya [golden skink]	<i>Eutropiscarinata</i>	50
6.	Spiny tailed lizard	<i>Saarahardwickii</i>	20
7.	Krait	<i>Bungaruscaeruleus</i>	5
8.	Garter snake	<i>Thamnophissirtalis</i>	30
9.	Wall lizard [Gecko]	<i>Hemiductylusfrenatus</i>	60
10.	Crow	<i>Corvussplendens</i>	35
11.	Sparrow	<i>Passer domesticus</i>	90
12.	Heron	<i>Ardeolagrayii</i>	45
13.	Cuckoo [koel bird]	<i>Eudynamysscolopaceus</i>	10
14.	Cat	<i>Feliscatus</i>	2
15.	Rat	<i>Rattusrattus</i>	14
16.	Dog	<i>Canis lupus familiaris</i>	6

- In this list the Habitat Animals are Listed here & some Migratory animals are not listed here.



## INVERTEBRATE'S FAUNA DETAILS

S.N.	NAME OF FAUNA	ZOOLOGICAL NAME OF FAUNA	NUMBERS OF FAUNA (APPROX.)
1.	Zooplankton	<i>Cladocera</i>	2000
2.	Zooplankton	<i>Copepods</i>	1500
3.	Leech	<i>Hirudinariagranulosa</i>	50
4.	Snail [fresh water]	<i>Pilaglobosa</i>	800
5.	Crab	<i>Caricanus</i>	100
6.	Millipede	<i>Julus</i>	400
7.	Centipede	<i>Scolopendra</i>	500
8.	Scorpion	<i>Palamnaeus</i>	60
9.	Spider	<i>Araneae</i>	10,000
10.	Cockroach	<i>Periplanetaamericana</i>	200
11.	Grasshopper	<i>Melanopus</i>	20,000
12.	Mosquito	<i>Anopheles quadrimaculants</i>	7000
13.	Dengue mosquito	<i>Aedesaegypti</i>	400
14.	Stick insect	<i>Carausinus</i>	2500
15.	Leaf insect	<i>Phyllium scythe</i>	9000
16.	Mantis [praying mantis]	<i>Mantis religiosa</i>	8000
17.	Dragon fly	<i>Dragon fly</i>	2500
18.	Butterfly	<i>Papillio</i>	2000
19.	Beetle	<i>Melolontho</i>	6000
20.	Termite	<i>Isoptera</i>	12,000
21.	Wasp	<i>Vespula vulgaris</i>	400
22.	Cricket insect	<i>Grylluscampestris</i>	4500

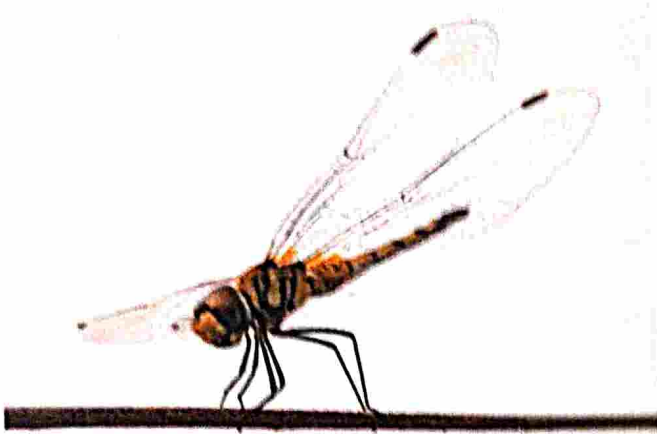
- In this list the Habitat Animals are Listed here & some Migratory animals are not listed here.



*Polypedatus leucomystax*



*Apis mellifera*



*Anisoptera*



*Caricanus*



*Ardeola grayii*



*Corvus splendens*





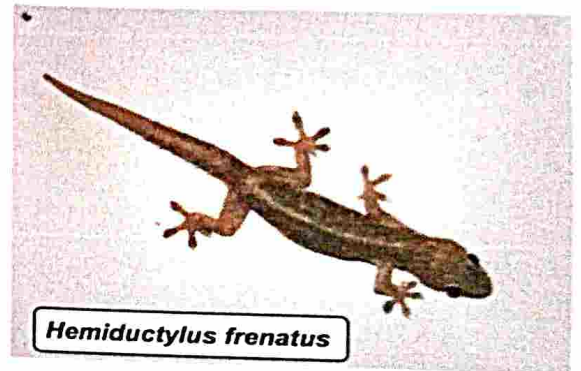
*Isoptera*



*Palamnaeus*



*Papilio*



*Hemiductylus frenatus*



*Felis catus*



*Duttaphrynus melanostictus*



***Pila globosa***



***Rattus rattus***



***Vespula vulgaris***





**GREEN INITIATIVE EXPENDITURE LAST PREVIOUS YEAR DETAILS:-**

S.N.	NAME OF PLANT	QUANTITY	PRICE	TOTAL PRICE
1	Arica palm ( <i>Dypsislutescens</i> )	20	140/-	2800/-
2	Neem plant( <i>Azadiractaindica</i> )	16	25/-	400/-
3	Show plant	15	35/-	525/-
4	Supari plant ( <i>Areca catechu</i> )	4	200/-	800/-
	Total price	55		4525/-

## RECOMMENDATIONS

- Review periodically the list of trees planted in the garden, allot numbers to the trees and keep records. Assign scientific names to the trees.
- Promote Environmental awareness as a part of course work in various curricular areas, independent research projects, and community service.
- Create awareness of environmental sustainability and take actions to ensure environmental sustainability.
- Establish a College Environmental Committee that will hold responsibility for the enactment, enforcement and review of the Environmental Policy. The Environmental Committee shall be the source of advice and guidance to staff and students on how to implement this Policy.
- Ensure that an audit is conducted annually and action is taken on the basis of audit report, recommendation and findings.
- Celebrate every year 5th June as 'Environment Day' and plant trees on this day to make the campus more Green.
- Indoor plantation to inculcate interest in students, Bonsai can be planted in corridor to bond a relation with nature.